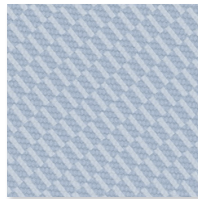


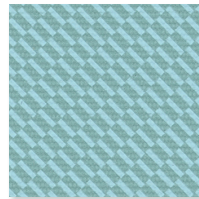
Lollipop  
543327



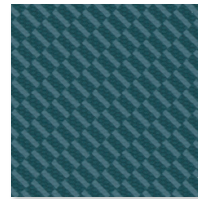
Dream On  
543312



Blue Skies  
543313



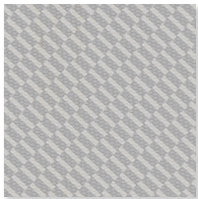
Island Time  
543319



Miami Beach  
543320



Favorite Jeans  
543315



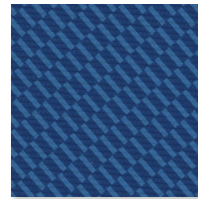
Big City  
543323



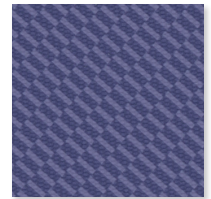
Neon Moss  
543321



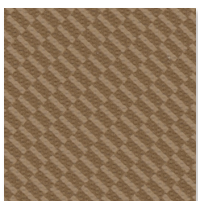
Cash Money  
543322



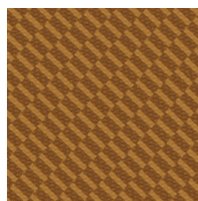
True Blue  
543314



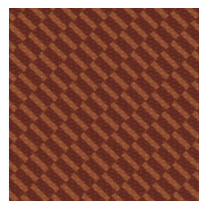
Grape Snow Cone  
543316



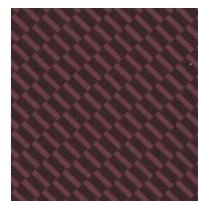
Waffle Cone  
543325



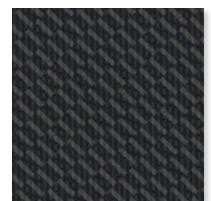
Golden Hour  
543324



Pumpkin Spice  
543326



Wine Down  
543317



Lights Out  
543318



**Content** 100% vinyl face, polyester knit backing

**Features**

- Phthalate free
- Flame Retardant (FR) free
- Formulated with EU and EPA FIFRA registered and approved biocides

**Finish** **PreFixx®** protective finish for increased stain resistance and easy cleaning. Bleach cleanable and may be disinfected with a variety of hospital grade disinfectants without discoloring or damaging the finish. Disinfection does not replace the need for regular care and maintenance. For a list of recommended disinfectants, view the Coated Fabrics Chemical Resistance Technical Bulletin located at [https://www.omnova.com/fileadmin/Resource\\_Center/Coated\\_Fabrics/Technical\\_Bulletins/OMN-ChemRes-TB.pdf](https://www.omnova.com/fileadmin/Resource_Center/Coated_Fabrics/Technical_Bulletins/OMN-ChemRes-TB.pdf).

**Weight** 28 oz./lin. yd [18.7 oz/yd<sup>2</sup>] / 849 g/lin. m [619 g/m<sup>2</sup>]

**Width** 54 in [137 cm]

**Performance Requirements** Meets or exceeds ACT Performance Guidelines | CFFA Healthcare 201 Certified



Also meets or exceeds:

- BIFMA - Class A
- CFFA-1a Wyzenbeek - 1.3 million double rubs (cotton duck abradant)
- Fungal resistance ASTM G-21-13
- Bacterial resistance AATCC 147-2011 & AATCC 100-2004
- Oil resistance CFFA-13
- Surface resistance AATCC-76 Antistatic
- Urine resistance AATCC-6 Colorfastness to Acids and Alkali
- Resistance to sulfide stain ASTM D 1712
- California Technical Bulletin 117-2013, Section 1
- IMO Part 8 Upholstered Furniture 3.1 Smoldering Cigarette
- IMO Part 8 Upholstered Furniture 3.2 Propane Flame
- NFPA 260, Class 1
- UFAC Fabric, Class 1



**Applications** Indoor/Outdoor

- Corporate Office • Food Service • Healthcare • Hospitality and Entertainment
- Marine • Recreational Vehicles • Retail

*Though our upholsteries can be used in many applications, customers are responsible for selecting an upholstery with attributes that meet the requirements of the specific end-use application – not all upholstery is suitable for all applications.*

*Multiple factors affect fabric durability and appearance retention, including end-user application and proper maintenance. Wyzenbeek results above 100,000 double rubs have not been shown to be a reliable indicator of increased fabric lifespan.*

For additional cleaning instructions and detailed specification information, visit: [www.omnova.com](http://www.omnova.com)

